

公司总部及子公司联系方式



中国华南研发制造基地

South China R&D and Manufacturing Base

广东拓斯达科技股份有限公司

Guangdong Topstar Technology Co., Ltd.

地址：广东省东莞市大岭山镇大塘朗创新路2号

ADD: No.2 Chuangxin Road, Datanglang, Dalingshan Town, Dongguan City, Guangdong Province.

电话：86-769-8305 0999

TEL: 0086 769 8305 0999

传真：86-769-8584 5562

FAX: 0086 769 8584 5562

邮箱：marketing@topstarltd.com

E-mail:marketing@topstarltd.com

中国华东研发制造基地

East China R&D and Manufacturing Base

江苏拓斯达机器人有限公司

Jiangsu Topstar Robot Co., Ltd.

地址：江苏省苏州市吴中经济开发区郭巷街道淞葭路1999号

ADD: No.1999 Songjia Road, Guoxiang Street, Wuzhong Economic Development Zone, Suzhou City, Jiangsu Province

电话：0512-8686 4305

TEL: 0512-8686 4305

手机：185 0156 0757

MOB: 185 0156 0757

苏州拓斯达智能装备有限公司

Suzhou Topstar Intelligent Equipment Co., Ltd.

地址：江苏省苏州市吴中经济开发区郭巷街道淞葭路1999号C栋1楼

ADD: 1F, Building C, No.1999 Songjia Road, Guoxiang Street, Wuzhong Economic Development Zone, Suzhou City, Jiangsu Province

电话：0512-5288 9310

TEL: 0512-5288 9310

手机：185 0156 0757

MOB: 185 0156 0757

宁波拓晨机器人科技有限公司

Ningbo Topstar Robot Technology Co., Ltd.

地址：浙江省余姚市风山街道舜汇东路93弄

ADD: Lane 93, Shunhui East Road, Fengshan Street, Yuyao City, Zhejiang Province

电话：86-574-8610 5571

TEL: 86-574-8610 5571

传真：86-574-8610 5571

FAX: 86-574-8610 5571

手机：137 7723 2779

MOB: 137 7723 2779

拓斯达（越南）科技有限公司

TOPSTAR (VIETNAM) TECHNOLOGY CO.,LTD.

地址：北宁省北宁市武宁坊京阳王路48号

ADD: No. 48 Kinh Duong Vuong Street, Vu Ninh Ward, Bac Ninh City, Bac Ninh Province

电话：0084-346-860 156

TEL: 0084-346-860 156

手机：186 0209 6307

MOB: 186 0209 6307

有关产品性质和适用范围的说明并不保证产品属性，仅作可供了解的信息。我们的供货范围及提供的服务完全以合同条款为准绳。技术数据和插图仅作为供货参考。保留更改权利。

Feature and scope of the product does not guarantee the product attributes,only for reference.Our scope of delivery and services provided are based solely on the terms of delivery and services provided are based solely on the terms of the contract.Technical data and illustration are only for reference .We reserve the rights of changing.



全国统一客服热线
Domestic Service Hotline
400-096-8005
Http://www.topstarltd.com

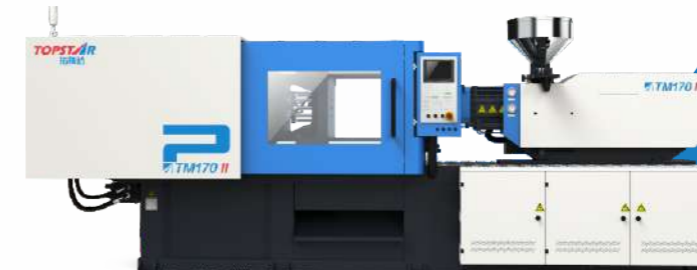
TSDSC2023-B

TMII 系列注塑机

TMII SERIES INJECTION MOLDING MACHINE

机铰式液压伺服驱动

Toggle Hydraulic Servo Driven



股票代码 Stock Code 300607



苏州吴中经济开发区——华东研发制造基地

Suzhou Wuzhong Economic Development Zone - East China R&D and Manufacturing Base

Introduction of Injection Molding Machine Business Unit

注塑机事业部介绍

让注塑制造更高效，让工业制造更美好

Make injection molding manufacturing more efficient, make industrial manufacturing better

拓斯达注塑机事业部是国内唯一拥有注塑机到辅机全套设备自主研发体系的注塑装备机构，具有自研率高、用户群广、集成经验丰富、可整厂实施四大优势。

坚持“让工业制造更美好”的使命，立足于拓斯达智能装备平台，汇聚30余年品牌的注塑机传承，致力推进注塑机和注塑系统工程更智能，为客户提供注塑全流程、全周期产品服务。

Topstar Injection Molding Machine Business Unit is the only domestic injection molding equipment organization with an "injection molding machine and auxiliary equipment self-research and self-production system". Its advantages are high self-research rate, wide user base, integration experience and implementation of the whole plant.

Topstar insists on the mission of "making industrial manufacturing better". Based on the Topstar intelligent equipment platform and more than 30 years of brand injection molding machine heritage, we are committed to promoting more intelligent injection molding machines and system engineering, to provide customers with the whole process and the whole cycle of injection molding product services.

研发理念

R&D Concept

拓斯达注塑机研发理念聚焦“系统化、通用化、精密化、性价比”。Topstar injection molding machine research and development concept focus on "systematization, universalization, precision, cost-effectiveness".

系统化是指通过硬件注塑机机械手辅机的配合，实现如“机械手跟踪锁模位置补偿”提高注塑工作站性能，通过软件注塑机控制系统实现注塑机辅机一体化控制，形成注塑行业系统化整体解决方案。

Systematization refers to the use of hardware to enable the injection molding machine, robot and auxiliary machine to cooperate to achieve "robot tracking clamping position compensation" and improve the performance of the injection molding station. At the same time, the use of "injection molding machine control system" software to achieve the integration of injection molding machine and auxiliary machine control, thus forming a systemic overall solution for the injection molding industry.

通用化是指拓斯达注塑机面向大多数行业，增加注塑机应用的场景，为客户多种类产品生产提供便利。

Generalization means that the Topstar injection molding machine applies to most industries and scenarios of injection molding machine applications, and it can facilitate the production of many kinds of products for customers.

精密化是指通过自主研发，不断优化产品设计，提升温度、速度、注射压力、降低原料及能源消耗等关键指标控制，提升制品质量及生产效益。

Precision refers to the optimization of independent research and product design to improve temperature, speed, injection pressure; reduce raw materials; control energy consumption and other key indicators, to improve product quality and production efficiency.

性价比则满足与相同价位产品，实现在配件、功能上提升10%-15%的设计原则，为客户提效降本。

Cost-effectiveness refers to the design principle of "10%-15% improvement in accessories and functions of injection molding equipment" when comparing with products of the same price level, to improve efficiency and reduce costs for customers.

TMII Series Injection Molding Machine

TMII 系列注塑机

Product Introduction

产品介绍

注塑机具有能一次成型外型复杂、尺寸精确或带有金属嵌件的质地密致的塑料制品的能力。
The injection molding machine has the ability to mold dense plastic products with complex appearance, precise dimensions or metal inserts in one go.

产品特点

Product Features



Application Industries

应用行业

电子类

electronics



光电类

Optoelectronics



3C 家电

3C home appliances



化妆品

cosmetics



汽配行业

auto parts



医疗类

Medical products



容器类

containers



Product Accessories

产品配件

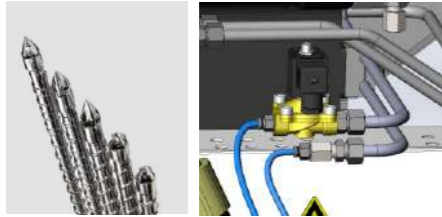
TM II通用型精密伺服注塑机 90T-470T

TM II general-purpose precision servo-driven injection molding machine 90T-470T



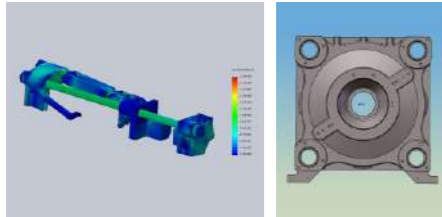
标配KEBA电脑、菲仕电机、台达驱动，搭配自研控制程序，生产控制更精准。

Standard KEBA controller, PHASE motor, DELTA drive, with self-developed control program, more precise production control.



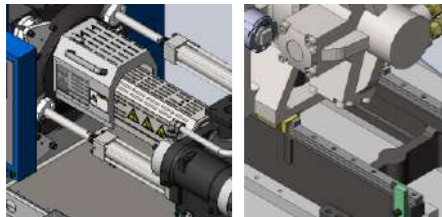
标配电镀螺杆、下料口温度控制，生产效率更高，适用胶料范围更广。

Standard configuration of plating screw and temperature control of the offload, higher production efficiency, and wider application range of rubber materials.



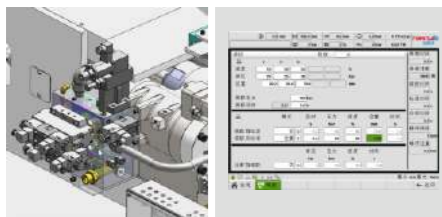
优化锁模设计，强度更高更稳定。

Optimized clamping design, higher strength and more stable.



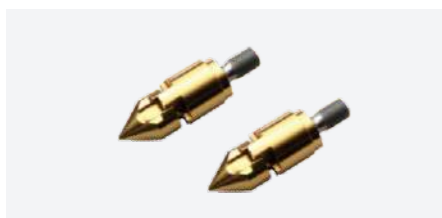
采用斜排双射移油缸及线性导轨，射胶更加精准稳定。

Diagonal double carriage cylinders and linear guide, more accurate and stable injection.



预塑采用比例背压控制，操作简便，可实现多段背压设置，精度更高，提高塑化品质。

Pre-plasticizing adopts proportional back pressure control, easy to operate. Multi-stage back pressure setting can be realized, with higher precision and improved plasticization quality.



精密的PVD合金三小件，适应更广泛的塑化要求。

Precision PVD alloy screw head set, adapt to a wider range of plasticizing requirements.

Product Features

产品特点

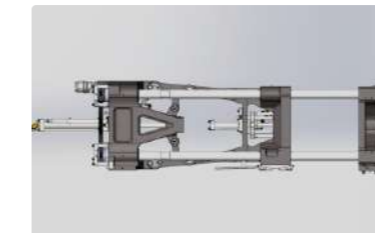


开模位置自动补偿功能，配合机械手精准抓取；

Automatic compensation function of mold opening position, cooperate with manipulator to grasp accurately;

拓斯达注塑机和辅机系统高度集成，操作便捷高效。

TOPSTAR injection molding machine and auxiliary system are highly integrated, convenient and efficient operation.



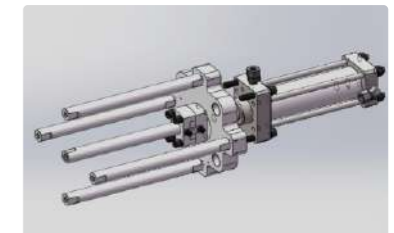
全新斜排机铰布局，可实现超长行程开模，开模位置精度 $< \pm 1\text{mm}$ ，模板运动又快又稳；

The new inclined row machine toggle layout can realize super long stroke mold opening, the mold opening position accuracy is less than $\pm 1\text{mm}$, and the mold movement is fast and stable;



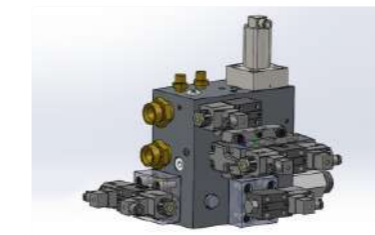
全新的调模机构，一键即可实现自动精准调模；

New mold adjustment mechanism, with one-key function available to realize automatic and accurate mold adjustment;



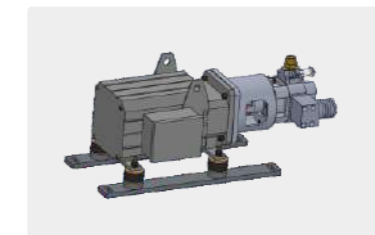
顶针推力加大20%，有利于连接件、插件类产品脱模，适用性更广；

The thrust of thimble is increased by 20%, which is conducive to demoulding of connector and plug-in products, and has wider applicability;



油路系统全面升级，安全，稳定，功能全，差动锁模运行速度快；

Oil circuit system fully upgraded, safe, stable, full-featured, with fast operation cycle of differential clamping;



伺服动力提升20%，射速提升20%，熔胶转速提升10%，综合效率提升15%；

Servo power increased by 20%, injection speed increased by 20%, plasticizing speed increased by 10%, and comprehensive efficiency increased by 15%;



控制系统二次开发，电脑操作界面人性化设计。

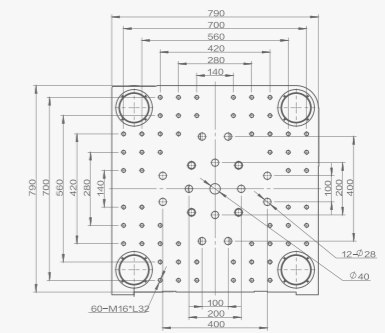
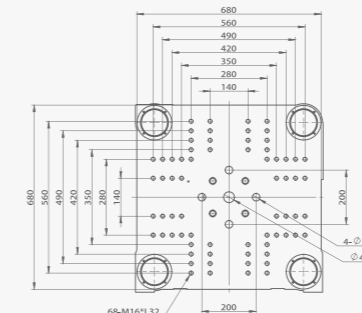
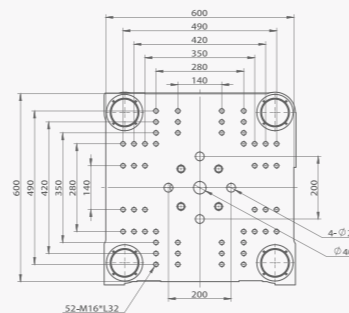
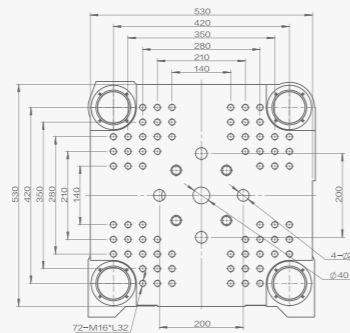
Secondary development of control system and humanized design of computer operation interface.

Product Parameters

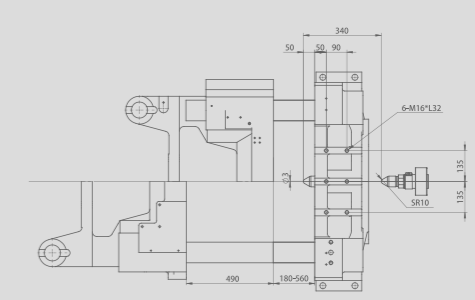
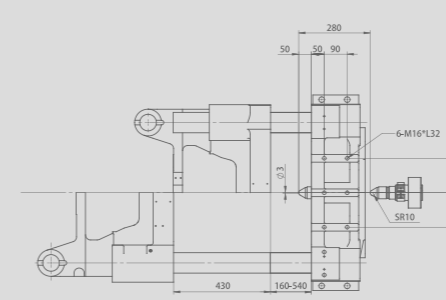
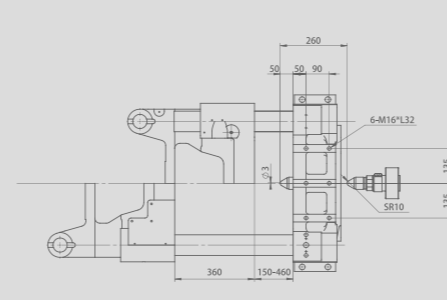
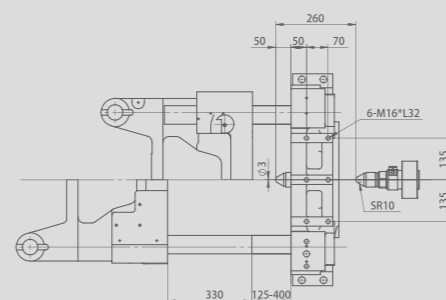
产品参数

注射部份		INJECTION UNIT	UNITS	TM90 II			TM130 II			TM170 II			TM220 II		
螺杆直径	Screw Diameter	mm	32	36	40	36	40	45	40	45	50	45	50	55	
螺杆长径比	Screw L/D Ratio	L/D	22.5	20.0	18.0	22.2	20.0	17.8	22.5	20.0	18.0	22.2	20.0	18.2	
螺杆行程	Screw Stroke	mm	150	150	150	170	170	170	200	200	200	210	210	210	
注射容积	Shot Volume	cm ³	121	153	188	173	214	270	251	318	393	334	412	499	
注射重量(PS)	Shot Weight(ps)	g	110	139	172	157	194	246	229	289	357	304	375	454	
		oz	3.9	4.9	6.0	5.5	6.8	8.7	8.1	10.2	12.6	10.7	13.2	16.0	
★ 注射压力	Injection Pressure	kgf/cm ²	2393	1890	1531	2301	1864	1473	2362	1866	1511	2299	1862	1539	
★ 注射速率	Injection Rate	cm ³ /s	97	122	151	122	151	191	151	191	236	191	236	285	
★ 注射速度	Injection Speed	mm/s	120	120	120	120	120	120	120	120	120	120	120	120	
★ 螺杆转速	Screw Speed	rpm		260			260			230			200		
射咀推力	Nozzle Contact Force	t		4.2			4.2			6.2			6.2		
射咀行程	Nozzle Stroke	mm		260			260			280			340		
锁模部份		CLAMPING UNIT	UNITS	TM90 II			TM130 II			TM170 II			TM220 II		
锁模力	Clamping Force	t		90			130			170			220		
★ 开模行程	Opening Stroke	mm		330			360			430			490		
模板尺寸(水平×垂直)	Platen size(H×V)	mm		530×530			600×600			680×680			790×790		
导柱内距(水平×垂直)	Space Between Tie Bars(H×V)	mm		360×360			410×410			470×470			530×530		
容模量(最薄-最厚)	Mould Thickness (Min)	mm		125			150			160			180		
		Mould Thickness (Max)	mm		400			460			540			560	
模板最大距离	Max. Daylight	mm		730			820			970			1050		
★ 顶出推力	Ejector Force	t		5.5			5.5			5.5			6.7		
顶出行程	Ejector Stroke	mm		120			120			140			160		
定位法兰	Locating Ring	mm		100			100			125			125		
电力/电热		POWER/HEATING UNIT	UNITS	TM90 II			TM130 II			TM170 II			TM220 II		
系统压力	System Pressure	kgf/cm ²		175			175			175			175		
★ 油泵电机功率	Pump Power	kw		13			18			22			26		
电热量	Heating Power	kw		7			9.7			10.2			13.6		
温度控制段数	Number of Temp Control Zones			3+1			3+1			3+1			3+1		
其它		OTHERS	UNITS	TM90 II			TM130 II			TM170 II			TM220 II		
机器尺寸(长×宽×高)	Machine Dimensions(L×W×H)	m		4.46×1.24×1.84			4.74×1.3×1.9			5.3×1.38×1.97			5.9×1.54×2.12		
油箱容积	Oil Tank Capacity	L		150			150			200			240		
机器重量	Machine Weight	t		3			3.7			4.5			6.7		

模板正面尺寸
Platen dimensions



模板侧面尺寸
Platen dimensions



由于技术不断发展、设计的改进及更新，以上规格如有更改，恕不另行通知。

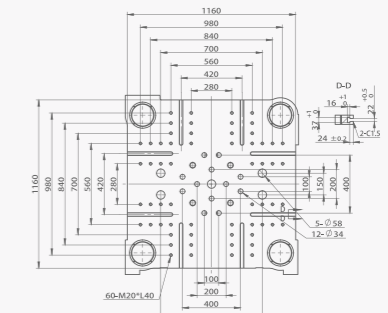
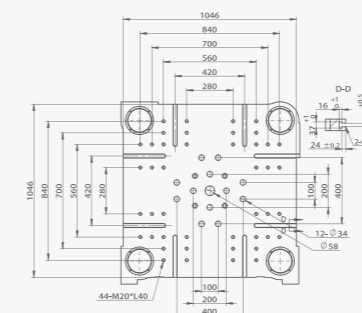
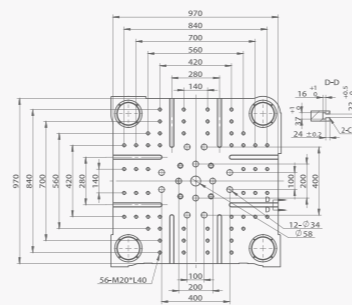
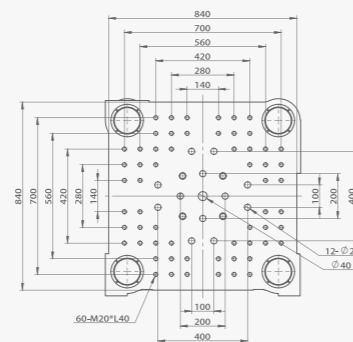
Due to the continuous development of technology, improvement and update of design, the above specifications are subject

Product Parameters

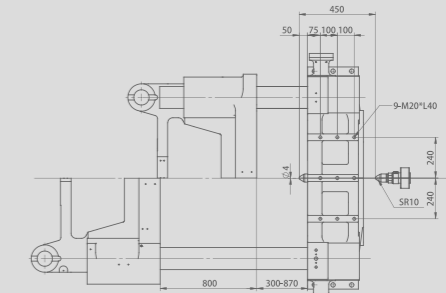
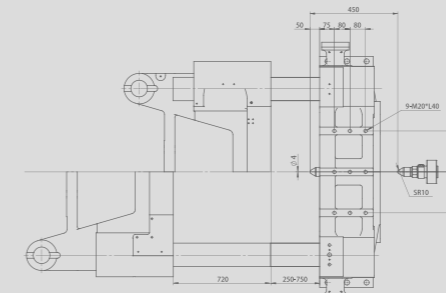
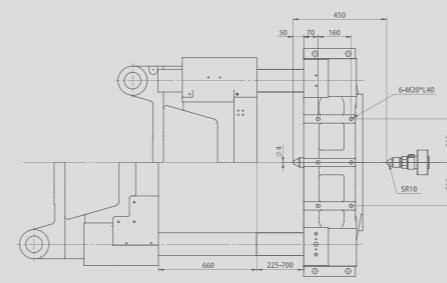
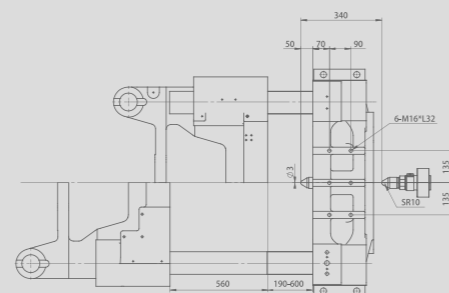
产品参数

注射部份		INJECTION UNIT	UNITS	TM260 II			TM330 II			TM400 II			TM470 II		
螺杆直径	Screw Diameter	mm	50	55	60	60	65	70	65	70	75	75	80	85	
螺杆长径比	Screw L/D Ratio	L/D	22.0	20.0	18.3	21.7	20.0	18.6	21.5	20.0	18.7	21.3	20.0	18.8	
螺杆行程	Screw Stroke	mm	240	240	240	280	280	280	320	320	320	360	360	360	
注射容积	Shot Volume	cm ³	471	570	679	792	929	1078	1062	1232	1414	1590	1810	2043	
注射重量(PS)	Shot Weight(ps)	g	429	519	618	720	846	981	966	1121	1286	1447	1647	1859	
		oz	15.1	18.3	21.7	25.4	29.8	34.5	34.0	39.4	45.3	50.9	58.0	65.4	
★ 注射压力	Injection Pressure	kgf/cm ²	2257	1865	1567	2188	1864	1607	2085	1798	1566	1984	1744	1545	
★ 注射速率	Injection Rate	cm ³ /s	236	285	339	331	388	450	388	450	517	468	533	602	
★ 注射速度	Injection Speed	mm/s	120	120	120	117	117	117	117	117	117	106	106	106	
★ 螺杆转速	Screw Speed	rpm		200			200			180			180		
射咀推力	Nozzle Contact Force	t		6.2			9.1			9.1			9.1		
射咀行程	Nozzle Stroke	mm		340			450			450			450		
锁模部份		CLAMPING UNIT	UNITS	TM260 II			TM330 II			TM400 II			TM470 II		
锁模力	Clamping Force	t		260			330			400			470		
★ 开模行程	Opening Stroke	mm		560			660			720			800		
模板尺寸(水平×垂直)	Platen size(H×V)	mm		840×840			970×970			1046×1046			1160×1160		
导柱内距(水平×垂直)	Space Between Tie Bars(H×V)	mm		580×580			680×680			730×730			820×820		
容模量(最薄-最厚)	Mould Thickness (Min)	mm		190			225			250			300		
		Mould Thickness (Max)	mm		600			700			750			870	
模板最大距离	Max. Daylight	mm		1160			1360			1470			1670		
★ 顶出推力	Ejector Force	t		6.7			6.7			11.0			11.0		
顶出行程	Ejector Stroke	mm		160			160			220			220		
定位法兰	Locating Ring	mm		125			125			160			160		
电力/电热		POWER/HEATING UNIT	UNITS	TM260 II			TM330 II			TM400 II			TM470 II		
系统压力	System Pressure	kgf/cm ²		175			175			175			175		
★ 油泵电机功率	Pump Power	kw		34			45			52			52		
电热量	Heating Power	kw		17.3			21.3			23.4			31.6		
温度控制段数	Number of Temp Control Zones			3+1			4+1			5+1			5+1		
其它		OTHERS	UNITS	TM260 II			TM330 II			TM400 II			TM470 II		
机器尺寸(长×宽×高)	Machine Dimensions(L×W×H)	m		6.21×1.6×2.2			7.29×1.86×2.31			7.92×1.92×2.24			8.65×1.93×2.29		
油箱容积	Oil Tank Capacity	L		300			360			420			550		
机器重量	Machine Weight	t		7.5			11.1			14.8			17.5		

模板正面尺寸
Platen dimensions



模板侧面尺寸
Platen dimensions

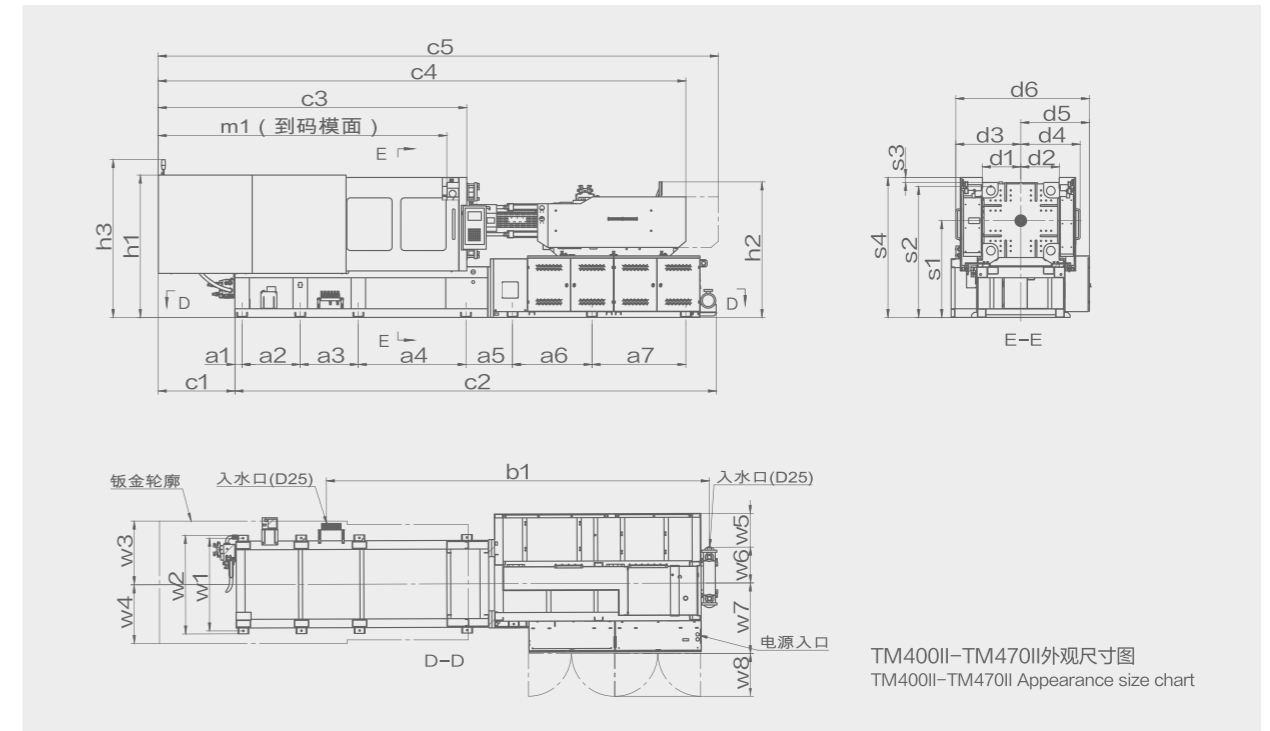
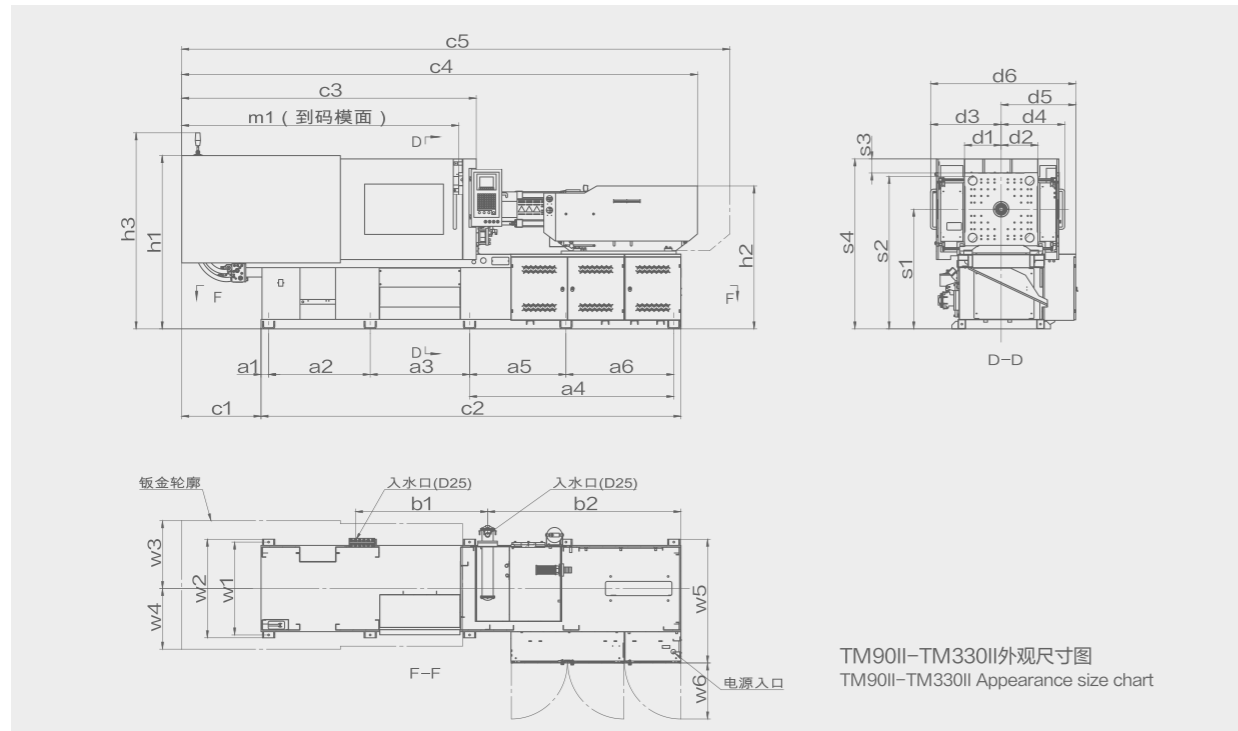


由于技术不断发展、设计的改进及更新，以上规格如有更改，恕不另行通知。

Due to the continuous development of technology, improvement and update of design, the above specifications are subject

Product Specification

产品规格



外观尺寸 Appearance size

	TM90 II	TM130 II	TM170 II	TM220 II	TM260 II	TM330 II
a1	80	80	80	65	65	110
a2	791	836	997	1190	1240	1470
a3	784	894	1013	1060	1180	1250
a4	1910	1935	2020	—	—	—
a5	—	—	—	1070	1160	1493
a6	—	—	—	1135	1135	1342
b1	1603	1284	1285	1565	1410	2881
b2	1343	1825	1955	2085	2180	1667
c1	674	714	775	836	885	1027
c2	3640	3820	4200	4590	4850	5760
c3	2375	2581	2914	3202.5	3436	3868
c4	4196	4478	5018	5555	5866	6839
c5	4456	4738	5298	5895	6206	7289
d1	272	307	347	397	430	509
d2	272	307	347	397	430	495
d3	586.5	612	651.5	750	783	866
d4	541.5	577	616.5	675	708	802
d5	655	690	730	794	824	995
d6	1241.5	1302	1381.5	1544	1607	1861

	TM90 II	TM130 II	TM170 II	TM220 II	TM260 II	TM330 II
h1	1600	1660	1735	1882	1962	2071
h2	1395	1425	1475	1540	1596	1711
h3	1840.5	1900.5	1975.5	2122.5	2202.5	2311.5
w1	720	790	870	998	1058	1210
w2	780	850	930	1058	1118	1290
w3	557	582	590	719	753	831
w4	512	547	555	643.5	679	788
w5	1045	1045	1195	1323	1313	1640
w6	590	590	590	590	590	631
s1	1160	1190	1230	1295	1335	1390
s2	1400	1465	1545	1650	1722	1842
s3	133	133	128	154.5	160	148
s4	1565	1625	1572	1841.5	1992	2037
m1	2225	2409	2741	3041	3240	3707

外观尺寸 Appearance size

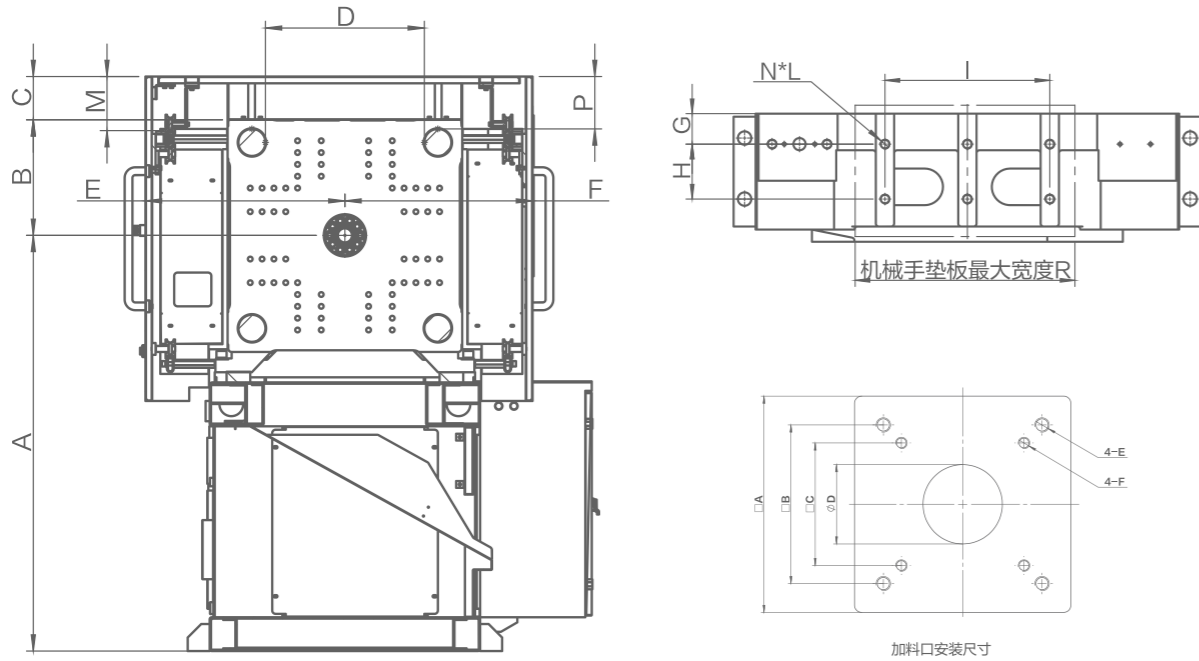
	TM400 II	TM470 II
a1	100	105
a2	900	980
a3	900	980
a4	1450	1550
a5	645	730
a6	1100	1100
a7	1300	1300
b1	5305	5547
c1	1080	1169
c2	6820	7180
c3	4442	4877
c4	7465	8197
c5	7915	8647
d1	540	600
d2	545	600
d3	965	980
d4	811	880
d5	950	950
d6	1915	1930

	TM400 II	TM470 II
h1	2012	2067
h2	1948	1972
h3	2236	2291
w1	1284	1410
w2	1364	1490
w3	896	966
w4	797	867
w5	456	447
w6	509	518
w7	950	950
w8	590	590
s1	1380	1380
s2	1865	1922
s3	59	54
s4	1979	2034
m1	4165	4580

由于技术不断发展、设计的改进及更新，以上规格如有更改，恕不另行通知。
Due to the continuous development of technology, improvement and update of design, the above specifications are subject

Installation Dimensions

产品安装尺寸



机械手安装接口尺寸 (注: A尺寸不含避震脚)

Robot assemble connecting size (Size A without level pad)

机型	TM90 II	TM130 II	TM170 II	TM220 II	TM260 II	TM330 II	TM400 II	TM470 II
A	1160	1190	1230	1295	1335	1380	1380	1380
B	272	302	342	397	427	497	537	597
C	133	133	128	154.5	160	150	62	57
D	360	410	470	530	580	680	730	820
E	525	550	590	686.5	722	804	849	919
F	480	515	555	611.5	647	751	749	819
G	50	50	50	50	70	70	75	75
H	70	90	90	90	90	160	80+80	100+100
I	270	270	270	270	270	420	420	480
L	M16	M16	M16	M16	M16	M20	M20	M20
M	160	160	160	197	197	222	117	117
N	6	6	6	6	6	6	9	9
P	165	160	155	191.5	202	197	114	114
R	300	340	390	440	480	580	620	700

注塑机加料口安装尺寸

Installation size of injection molding machine filling port

机型	TM90 II	TM130 II	TM170 II	TM220 II	TM260 II	TM330 II	TM400 II	TM470 II
A	150	150	150	150	150	160	160	160
B	110	110	110	110	110	110	110	110
C	85	85	85	85	85	—	—	—
D	55	55	55	55	55	75	75	75
E	M10	M10	M10	M10	M10	M10	M10	M10
F	M8	M8	M8	M8	M8	—	—	—

Configuration Table of Standard Series

标准系列配置表

锁模部分 Mold Clamping	TM90 II	TM130 II	TM170 II	TM220 II	TM260 II	TM330 II	TM400 II	TM470 II
加大容量50/100/150mm	○	○	○	○	○	○	○	○
机铰用铜套	●	●	●	●	●	●	●	●
拉杆导套用含油铜套	●	●	●	●	●	●	●	●
液压马达齿轮调模	●	●	●	●	●	●	●	●
吊模架	○	○	○	○	○	○	○	○
油脂润滑(配自润滑轴承)	○	○	○	○	○	○	○	○
模具强制复位装置	●	●	●	●	●	●	●	●
加装模具隔热板	○	○	○	○	○	○	○	○
弓形码模夹	●	●	●	●	●	●	●	●
加装机械安全锁	○	○	○	○	○	○	○	○
锁模导轨加装钢带	●	●	●	●	●	●	●	●
磁力模板	○	○	○	○	○	○	○	○
模板增加T型槽+码模孔	○	○	○	○	○	●	●	●
模板增加T型槽	○	○	○	○	○	○	○	○
成品滑道	●	●	●	●	●	○	○	○

射胶部分 Glue Injectant	TM90 II	TM130 II	TM170 II	TM220 II	TM260 II	TM330 II	TM400 II	TM470 II
加长射嘴50/100/150/200mm	○	○	○	○	○	○	○	○
过滤网喷嘴组件	○	○	○	○	○	○	○	○
弹簧自锁射嘴(国产)	○	○	○	○	○	○	○	○
混色混炼螺杆	○	○	○	○	○	○	○	○
PMMA塑化组件	○	○	○	○	○	○	○	○
PC塑化组件	○	○	○	○	○	○	○	○
软PVC塑化组件	○	○	○	○	○	○	○	○
加大一级熔胶马达	○	○	○	○	○	○	○	○
减小一级/二级射胶机构	○	○	○	○	○	○	○	○
射台加装手动润滑泵	○	○	○	○	○	○	○	○
下料口温度检测	●	●	●	●	●	●	●	●
射移、射胶用线轨	●	●	●	●	●	●	●	●
双射移油缸	●	●	●	●	●	●	●	●
全封闭保温罩	●	●	●	●	●	●	●	●
加装风冷装置	○	○	○	○	○	○	○	○
射嘴防护罩	●	●	●	●	●	●	●	●
射台表面加花纹板	●	●	●	●	●	●	●	●
加装料斗	○	○	○	○	○	○	○	○
带轴承料斗滑动装置	○	○	○	○	○	○	○	○
加装磁力架座(配磁力架)	○	○	○	○	○	○	○	○
加大料斗	○	○	○	○	○	○	○	○
埋入式探针射嘴	○	○	○	○	○	○	○	○
冷水环增加电磁水阀	●	●	●	●	●	●	●	●

由于技术不断发展、设计的改进及更新, 以上规格如有更改, 恕不另行通知。

Due to the continuous development of technology, improvement and update of design, the above specifications are subject

钣金部分 Metal Plate		TM90 II	TM130 II	TM170 II	TM220 II	TM260 II	TM330 II	TM400 II	TM470 II
加宽机门（双边100mm）	Widened door (100mm on both sides)	○	○	○	○	○	○	○	○
降低安全门高度	Reduce the height of safety door	○	○	○	○	○	○	○	○
同步带电动门	Synchronous with electric door	○	○	○	○	○	○	○	○
锁模区加装滑动上盖板	Installation of top sliding cover plate in mold clamping area	●	●	●	●	●	○	○	○
加装一组6管冷却流量计	Installation of a set of 6-tube cooling flow meters	○	○	○	○	○	○	○	○
运水架（进出）配D10快插接头	Water carrier (in and out) with D10 quick connector	○	○	○	○	○	○	○	○
六进六出运水架（进出）配D12快插接头	6 in 6 out Water carrier (in and out) with D12 quick connector	●	●	●	●	●	●	●	●

液压部分 Hydraulic Part		TM90 II	TM130 II	TM170 II	TM220 II	TM260 II	TM330 II	TM400 II	TM470 II
标配一组液压抽芯	Standard 1 set hydraulic core pulling	●	●	●	●	●	●	—	—
标配二组液压抽芯	Standard 2 sets hydraulic core pulling	—	—	—	—	—	—	●	●
一组/二组/三组液压抽芯	Add a / two/three set of hydraulic core pulling system	○	○	○	○	○	○	○	○
一组/二组/三组液压抽芯配快速接头	One / two / three set of hydraulic core pulling system with quick coupling	○	○	○	○	○	○	○	○
一组气动抽芯	One set of pneumatic core pulling system	○	○	○	○	○	○	○	○
一组/二组/三组吹风	One/ two/three set of aeration system	○	○	○	○	○	○	○	○
液压旋转脱模（不带液压马达）	Hydraulic rotary demoulding (without hydraulic motor)	○	○	○	○	○	○	○	○
液压旋转脱模（带液压马达）	Hydraulic rotary demoulding (with hydraulic motor)	○	○	○	○	○	○	○	○
顶针/抽芯增加叠加单向阀	Thimble / core pulling system with stacked check valve	○	○	○	○	○	○	○	○
调模刹车液压马达	Hydraulic motor for mold adjustment brake	○	○	○	○	○	○	○	○
开模同步顶针/熔胶/抽芯	Synchronous thimble for mould opening / glue melting / core pulling	○	○	○	○	○	○	○	○
加装射移单向阀	With Carriage movement check valve	●	●	●	●	●	●	●	●
数控背压	CNC back pressure	●	●	●	●	●	●	●	●
液压安全锁	Hydraulic safety lock	●	●	●	●	●	●	●	●
加大一级/二级油泵电机	Upgrade the oil pump motor by a / two grade	○	○	○	○	○	○	○	○
油温预热功能	Oil temperature preheating function	○	○	○	○	○	○	○	○
加大油冷却器	Upgrade oil cooler	○	○	○	○	○	○	○	○
加装冷却水控制阀	Installation of cooling water control valve	○	○	○	○	○	○	○	○
高速伺服注射阀	High speed servo opening and closing valve	○	○	○	○	○	○	○	○
高速伺服开合模阀	High-speed servo open/close die valve	○	○	○	○	○	○	○	○
加装射移单向阀	With Carriage movement check valve	●	●	●	●	●	●	●	●
加装高压软管防爆链	Installation of high pressure hose explosion-proof chain	●	●	●	●	●	●	●	●

由于技术不断发展、设计的改进及更新，以上规格如有更改，恕不另行通知。
Due to the continuous development of technology, improvement and update of design, the above specifications are subject

电气部分 Electrical Part		TM90 II	TM130 II	TM170 II	TM220 II	TM260 II	TM330 II	TM400 II	TM470 II
电动旋转脱模（不含马达）	Electric rotary demoulding (excluding motor)	○	○	○	○	○	○	○	○
更改地区电压	Changing regional voltage	○	○	○	○	○	○	○	○
加装三色报警灯	Installation of three-color alarm light	●	●	●	●	●	●	●	●
一组2+3 220V/10A插座	One set 2+3 220V/10A power socket	●	●	●	●	●	●	●	●
二组三相32A插座	2 sets 2P 32A power socket	●	●	●	●	●	●	●	●
加装电源插座	Adding power outlets	○	○	○	○	○	○	○	○
配陶瓷发热圈	Equip ceramic heating ring	○	○	○	○	○	○	○	○
加装模具返回确认	Add mould for return confirmation	●	●	●	●	●	●	●	●
射嘴独立控制	Independent nozzle control	●	●	●	●	●	●	●	●
后门急停按钮	Emergency stop button of rear door	●	●	●	●	●	●	●	●
熔胶转速测试装置	Speed test device for glue melting	●	●	●	●	●	●	●	●
油位警报	Oil level alarm	○	○	○	○	○	○	○	○
油温过高报警	Super high oil temperature alarm	●	●	●	●	●	●	●	●
加装电度表	Installation of watt hour meter	○	○	○	○	○	○	○	○
加热用固态继电器	Solid state relay for heating	●	●	●	●	●	●	●	●
热流道接口（接电脑）	Hot runner interface (connected to computer)	○	○	○	○	○	○	○	○
气辅注射装置接口	Interface of gas assisted injection device	○	○	○	○	○	○	○	○
加装两组模具温控	Add two sets of mould for temperature control	○	○	○	○	○	○	○	○
锁模力检测及显示	Clamping force detection and display	○	○	○	○	○	○	○	○
顺序射胶接口	Sequential glue injection interface	○	○	○	○	○	○	○	○
顺序射胶（带顺序阀）	Sequential injection (with sequence valve)	○	○	○	○	○	○	○	○
欧规67	European standard 67	○	○	○	○	○	○	○	○
欧规12	European standard 12	○	○	○	○	○	○	○	○

其他部分 Other Part		TM90 II	TM130 II	TM170 II	TM220 II	TM260 II	TM330 II	TM400 II	TM470 II
射台表面加花纹板	Pattern plate on the surface of shooting table	●	●	●	●	●	●	●	●
更改钣金颜色（A/A2以外颜色）	Change metal plate color (color other than A/A2)	○	○	○	○	○	○	○	○

备注：标准配置“●”和备选配置“○”
Remark: Standard "●" and Optional "○"

After-Sale Service

售后服务

Sincerely Appreciate

衷心感谢

超过15000家客户见证并长期支持

Over 15000 customers have witnessed TOPSTAR growth and long supports



快速响应

快速响应客户的需求，收集客户的现场信息并记录故障，给出保养合理化建议；

Fast Response

Quickly respond to customer needs, collect customer site information and record the failure, give reasonable maintenance Suggestions;

快速到达

快速到达客户现场，进行设备维修；

Fast Arrival

Quickly arrive at customer site for equipment maintenance;



快速处理

快速处理，帮助客户第一时间将设备调整到最佳状态；

Fast Processing

Quickly processing to help customers adjust the equipment to the best state in the first time;

快速验收

快速完成服务项目验收。

Fast Acceptance

Quickly complete the service project acceptance.

 宁德时代 Ningde时代	 亿纬锂能 Yiwei Lili	 新能德 Xinenede
 珠海冠宇 Zhuhaiguanyu	 捷普绿点 Jiepu Lvdian	 蜂巢能源 Honeycomb Energy
 裕同科技 Yutong Technology	 多氟多 Duo Fuduo	 晶澳太阳能 Jingao Solar
 正崴集团 Zhengwei Group	 卫龙 Weilong	 长盈精密 Changying Precision
 欣旺达 Xinwangda	 伯恩光学 Boern Optics	 立讯精密 Lixun Precision
 长城汽车 Great Wall	 比亚迪 BYD	 富士康 Foxconn
 华为 Huawei	 宇瞳光学 Yutong Optics	 旺盈包装 Wangying Packaging
 三一重工 Sany Heavy Industry	 精研科技 Jingyan Technology	 新宝电器 Xinbao Appliances